

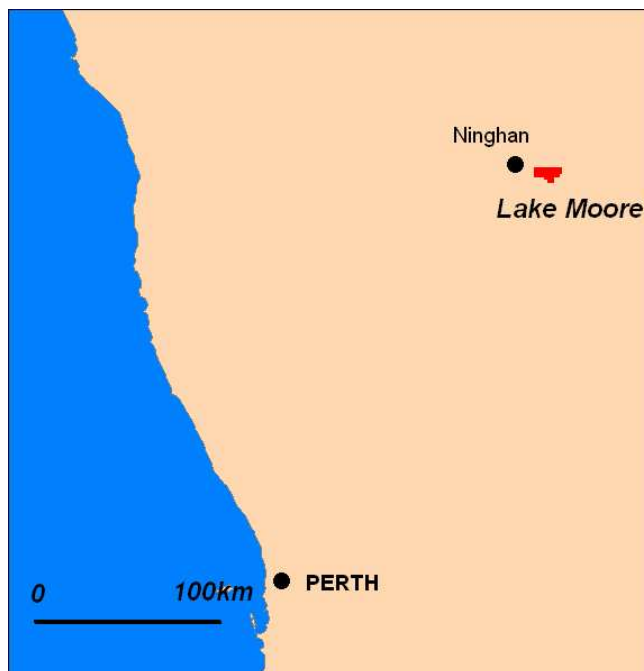
## ASX ANNOUNCEMENT

12 June 2007

---

### AURA IDENTIFIES RADIOMETRICALLY ANOMALOUS CALCRETE IN ITS LAKE MOORE PROPERTY

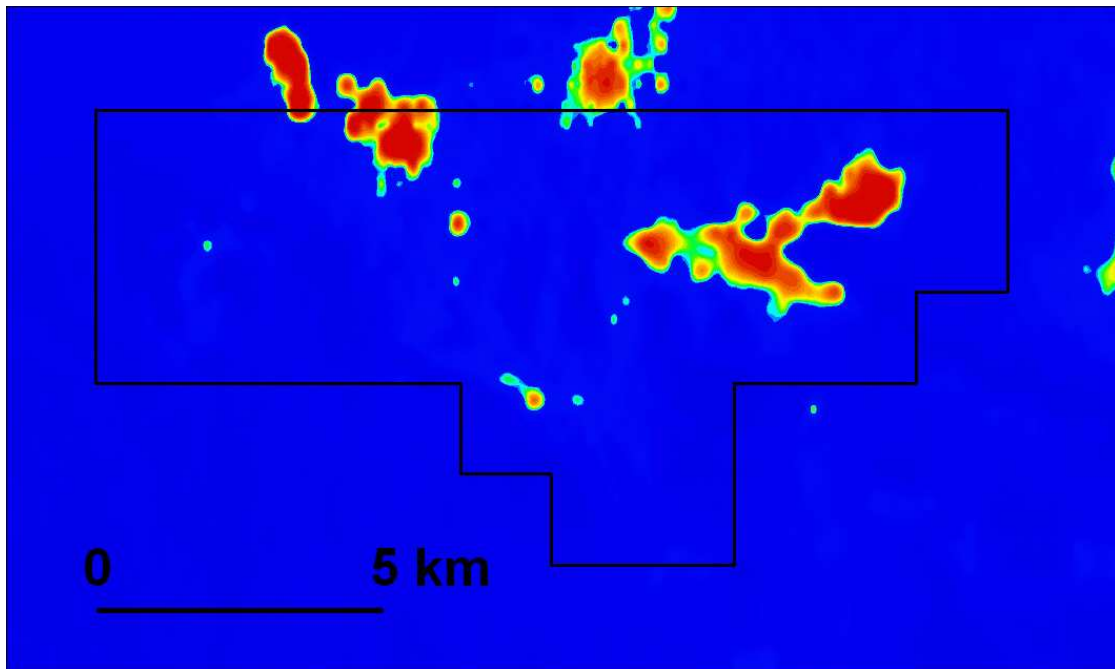
Aura Energy Ltd (ASX CODE: AEE) holds 20 target areas for calcrete-type uranium deposits in the Yilgarn Province of Western Australia. Its main calcrete exploration focus to date has been its Wondinong uranium deposit near Mt Magnet, where Aura has completed 335 drill holes in 2 separate drilling campaigns.



Yilgarn is the major uranium province of the world and contains the largest deposit of this type, BHP Billiton's Yeelirrie deposit. Paladin's Langer Heinrich is also of the same type.

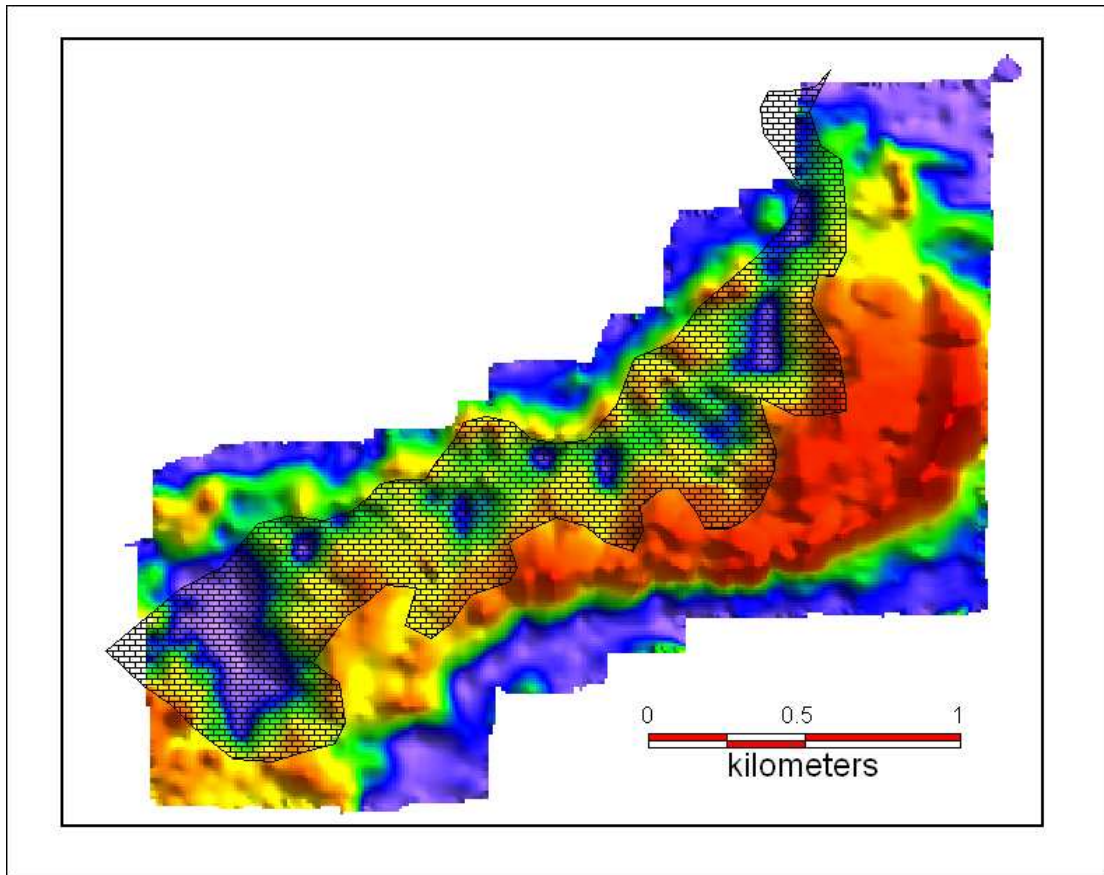
Aura also is continuing to evaluate the 19 calcrete uranium targets that it holds in addition to Wondinong. Fieldwork at its Lake Moore Project has identified a large area of outcropping calcrete on the northern edge of Lake Moore.

The calcrete is developed on an inlet of the lake with a high radiometric signature. A creek enters the inlet which drains some of the most radiometrically anomalous granites in this part of the Yilgarn. Such granites would provide an excellent source of uranium for any mineralisation that might be present.



**Lake Moore uranium channel radiometric image; the radiometrically anomalous inlet is in the centre-right of the image, and the “hot” granites are in the upper part of the image.**

The radiometric anomaly centred on the floor of the lake extends onto the southern edge of the calcrete (see image below). The calcrete itself, and the transitional zone to lake sediments, are important locations for uranium mineralisation elsewhere in the Yilgarn.



**Detailed radiometrics of the uranium-anomalous inlet at Lake Moore, and the mapped distribution of calcrete**

Aura has collected samples at Lake Moore for assay. Results are awaited.

Aura plans to drill the Lake Moore calcrete body in the second half of 2007.

**ENDS**

For further information contact:

Dr Bob Beeson  
 Managing Director  
 Tel: (08) 9228 0711

**Corporate Information**

**Directors**

B Fraser	Non-Executive Chairman
Dr B Beeson	Managing Director
S O’Loughlin	Non-Executive Director
J Stephenson	Non- Executive Director & Company Secretary

**Issued Capital**

As at the date of this report the issued capital of the Company is comprised of:

35,641,500 fully paid ordinary shares  
 17,858,500 listed options  
 4,050,000 unlisted options